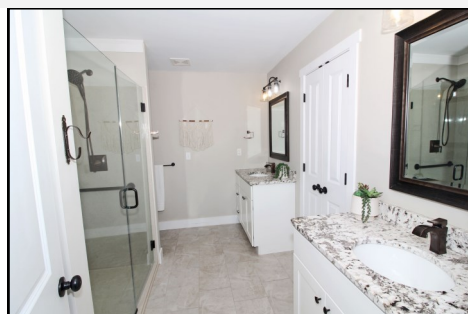




## 5795 CHARLOTTE DR ASHLAND, MO



Enjoy the ease of main-level living in this beautifully designed home! The open layout features a cozy gas fireplace, rich wood floors, and a desirable split-bedroom design. The kitchen features stunning granite counters, a handy walk-in pantry, and filtered water at your fingertips. The spacious primary bedroom offers a large walk-in closet, luxurious walk in shower and gorgeous his and her vanities. A massive 3-car garage with the ultimate workshop offers tons of storage and 220 outlet. The shed with a concrete floor and electricity provides extra room to keep things organized and tidy. Step outside to a covered patio overlooking the large, level fenced yard—perfect for relaxation or play. This home truly has it all!

**\*3 Bed \*2 Baths\* 1,720 Sq. Ft. \* 3 car garage \*Main level living \*Covered Patio \* Fenced Yard**



*Nicole Patterson*  
The road home begins with Nicole  
**kw** KELLERWILLIAMS.

Call/Text:  
573-619-7223